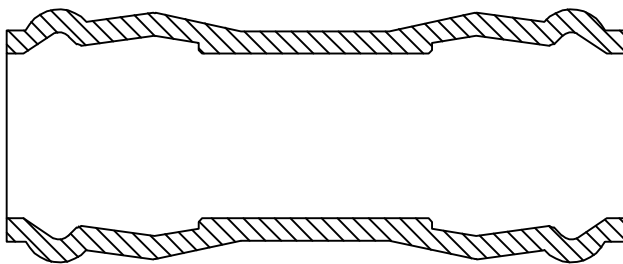
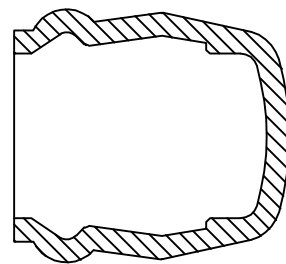


EQUAL TEE



COUPLING



END CAP

Note:

1. These bends are to be used in isolation only and not between two cast iron fittings.
2. PN16 Pressure Rating
3. Designed in accordance with AS/NZS 1477:1996.
4. Anchorage or thrust blocks are to be used with bend tee or end cap (see figure on MW-18 for detail).
5. For 90° bend see MW-18.
6. Fitting to be clearly marked with:  
James Hardie logo, 100mm, class 16, (manufacturing #), uPVC.



**BLUE BRUTE FITTINGS**

**Design and Material Standards  
MANUKAU WATER LIMITED**

DETAIL NO:

**MW-24**

UPDATED:

**JULY 2006**